

Common Survey problem photos

Hull Problems



Who knows what may be found here

This Trapper 28 broke its mooring, went aground and twisted the keel, It is now not vertical.



Westerly Centaur hard spot cracking at the bulkhead & berth divider



The same Trapper 28 showing keel dislodging



This is not stressing, just gel crazing caused by hot water from the skin fitting



No obvious fault, but areas that often show sign of stressing/cracking



Obvious distortion at the rigging support area



Rudder Problems



Two rudders, two Westerly Centaurs, the one on the left has a bent ruder stock

Might be worth investigating the cause of the rust staining



Miscellaneous Problems



Cracking across the rudder neck close to the stock

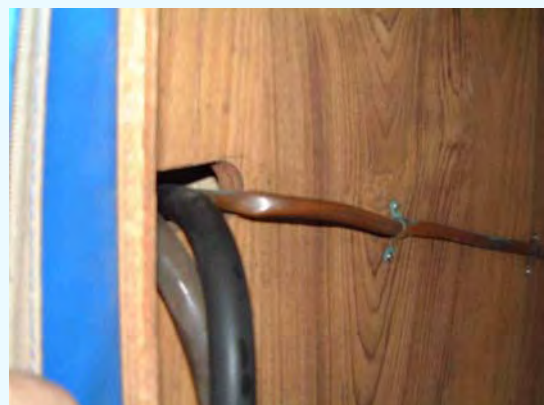


Corroded Gate valve

Corroded lifeline..not a lifeline you would trust your life to!



Serious cracking at rudder stock entry



Out of sight out of mind, thin walled copper gas pipe seriously kinked